

BH800 泥浆泵技术参数 Mud Pumps Technical Parameters



冲次 Stroke/minute	额定功率 Rated power		缸套直径 Cylinder Liner's Diameter,mm							
			170	160	150	140	130	120	110	
			额定压力 Rated Pressure Mpa (psi)							
			12.4(1771)	14.4(2057)	16.9(2414)	20.1(2871)	24.3(3471)	30 (4286)	35(5000)	
kW	HP	排量 DisplacementL/S(GPM)								
175	648	880	46.90	40.43	34.48	29.05	23.98	19.43	15.49	
160	592	805	42.88	36.96	31.52	26.56	21.92	17.76	14.16	
150	595	755	40.20	34.65	29.55	24.90	20.55	16.65	13.28	
140	518	705	37.52	32.34	27.58	23.24	19.18	15.54	12.39	
130	481	654	38.84	30.03	25.61	21.58	17.81	14.43	11.44	
120	444	604	32.16	27.72	23.64	19.92	16.44	13.32	10.56	
110	407	554	29.48	25.42	21.67	18.26	15.07	12.21	9.68	

Note: Basis of the 90% mechanic efficiency and 100% capacity efficiency.

HTB500 泥浆泵技术参数 Mud Pumps Technical Parameters



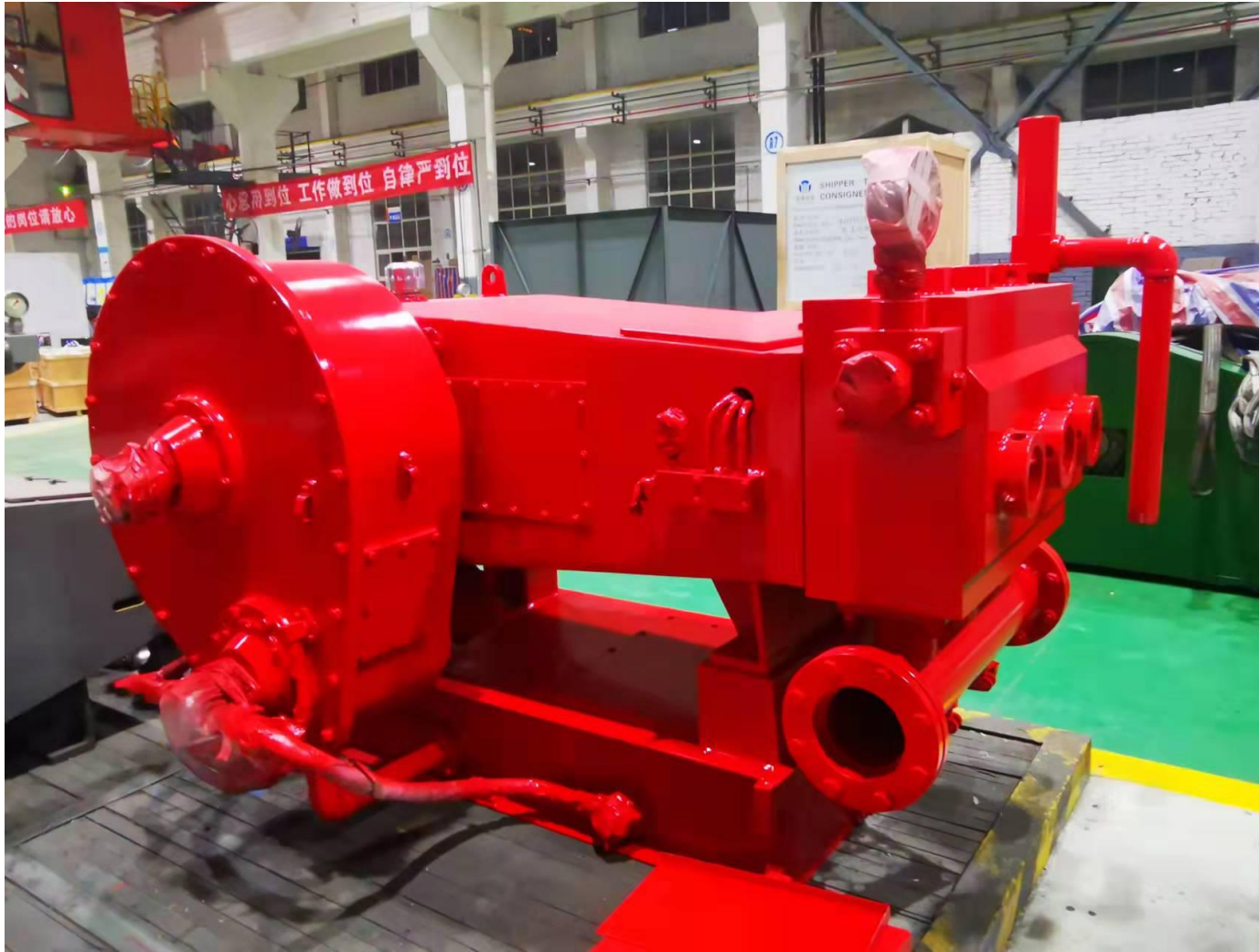
冲次 Stroke/minute	额定功率 Rated power		缸套直径 Cylinder Liner's Diameter,mm							
			170	160	150	140	130	120	110	100
			额定压力 Rated Pressure Mpa (psi)							
	9.4(1363)	10.6(1537)	12.1(1755)	13.9(2016)	16.1(2335)	18.9(2741)	22.5(3263)	27.2(3944)		
	kW	HP	排量 DisplacementL/S(GPM)							
165	373	500	35.67	31.60	27.77	24.19	20.86	17.77	14.94	12.34
150	339	455	32.43	28.73	25.25	21.99	18.96	16.16	13.58	11.22
140	316	424	30.27	26.81	23.56	20.53	17.70	15.08	12.67	10.47
130	294	394	28.11	24.90	21.88	19.06	16.44	14.00	11.77	9.73
120	271	364	25.94	22.98	20.20	17.60	15.17	12.93	10.86	8.98
110	249	333	23.78	21.07	18.52	16.13	13.91	11.85	9.96	8.23

Note: Basis of the 90% mechanic efficiency and 100% capacity efficiency.

HTB600 泥浆泵技术参数 Mud Pumps Technical Parameters







冲次 Stroke/minute	额定功率 Rated power		缸套直径 Cylinder Liner's Diameter,mm											
			114.3		101.6		88.9		76.2		69.9		63.5	
	kW	HP	排量 Displacement, lpm 和 额定压力 and Rated Pressure,psi											
			lpm	psi	lpm	psi	lpm	psi	lpm	psi	lpm	psi	lpm	psi
450	448	600	2111	1660	1668	2100	1277	2744	938	3734	788	4444	651	5377
300	448	600	1407	2489	1112	3151	851	4115	625	5601	526	6666	434	8066
200	448	600	938	3734	741	4726	568	6173	417	8402	350	9999	290	12099
120	448	600	563	6224	445	7877	341	10288	250	14003	210	16665	174	20165
50	188	253	235	6288	185	7958	142	10394	104	14147	87	16836	72	20372

Note: Basis of the 90% mechanic efficiency and 100% capacity efficiency.

HTB400 泥浆泵技术参数 Mud Pumps Technical Parameters





柱塞 直径 Plunger Dis	每转Per stroke 排量 Displacement	泵冲次/输入轴转速Strokes/Input speed 对应的排量和压力 Displacement and pressure									
		50/229rpm		100/457		200/914		300/1371		450/2057	
in(mm)	gpr (lpr)	gpm (lpm)	PSi (MPa)	gpm (lpm)	PSi (MPa)	gpm (lpm)	PSi (MPa)	gpm (lpm)	PSi (MPa)	gpm (lpm)	PSi (MPa)
3.5" (88.9)	0.75 (2.8)	38 (142)	10000 (70)	75 (284)	8242 (57.7)	150 (568)	4114 (28.8)	225 (851)	2742 (19.2)	338 (1277)	1828 (12.8)
4" (101.6)	0.98 (3.7)	49 (185)	8000 (56)	98 (371)	6370 (44.2)	196 (741)	3150 (22)	294 (1112)	2100 (14.8)	441 (1667)	1560 (9.8)
4.5" (114.3)	1.24 (4.7)	62 (235)	6000 (42)	124 (469)	5030 (35)	248 (938)	2485 (17.5)	372 (1407)	1660 (11.7)	557 (2110)	1220 (7.8)

Note: Basis of the 90% mechanic efficiency and 100% capacity efficiency.

HTB200 泥浆泵技术参数 Mud Pumps Technical Parameters



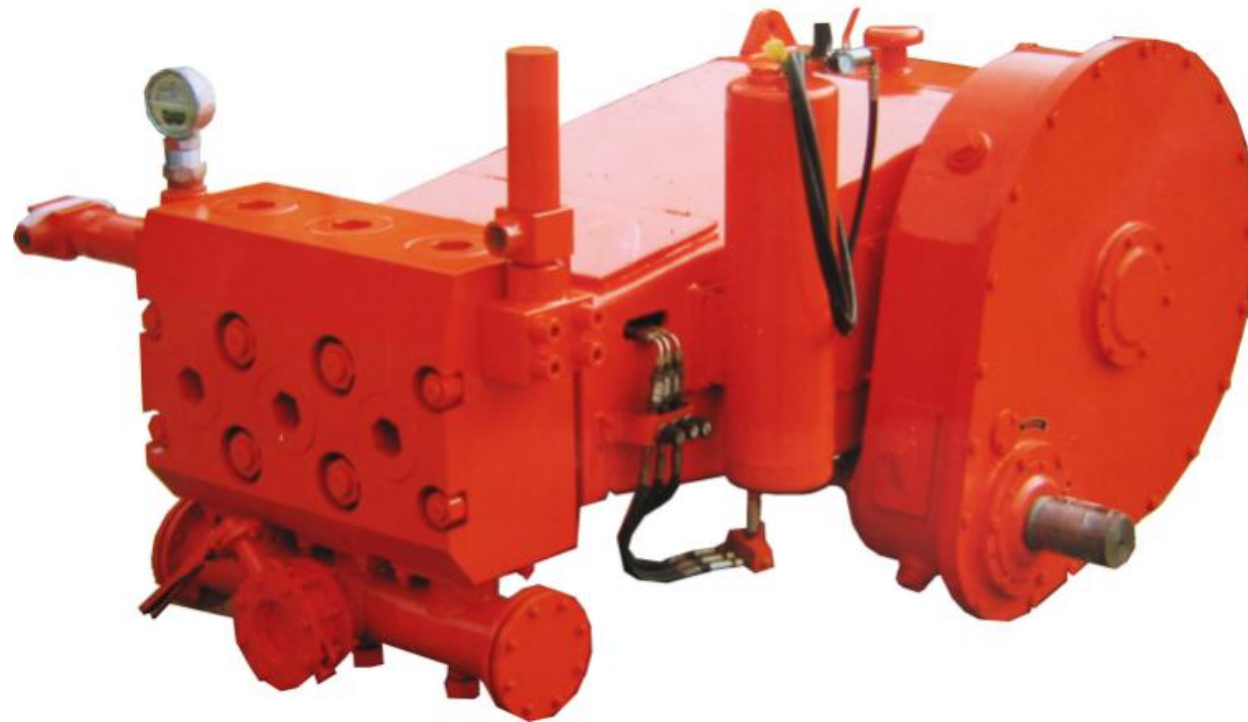
冲次 Stroke min ⁻¹	泵速 Pump speed min ⁻¹	柱塞直径 Plunger Dia.mm								
		90			100			110		
		排量 Displacement L/min	压力 Pressure MPa	Input power kW	排量 Displacement L/min	压力 Pressure MPa	Input power kW	排量 Displacement L/min	压力 Pressure MPa	Input power kW
50	230	128	42	88	159	35	91	192	20	63
75	345	193	41	129	238	33.4	130	288	20	94
100	460	257	31	130	318	25.0	130	384	20	125
150	690	386	20.6	130	477	16.7	130	577	13.7	130
200	920	515	15.4	130	636	12.5	130	769	10.3	130
250	1150	643	12.3	130	795	10.0	130	962	8.2	130
282	1300	726	10.9	130	896	8.8	130	1085	7.3	130

Note: Basis of the 90% mechanic efficiency and 100% capacity efficiency.

Complete Mud Pump Unit for Export Projects



Vehicle Pump



Control cabinet



Movable pump cabinet



Skid water injection pump house

